

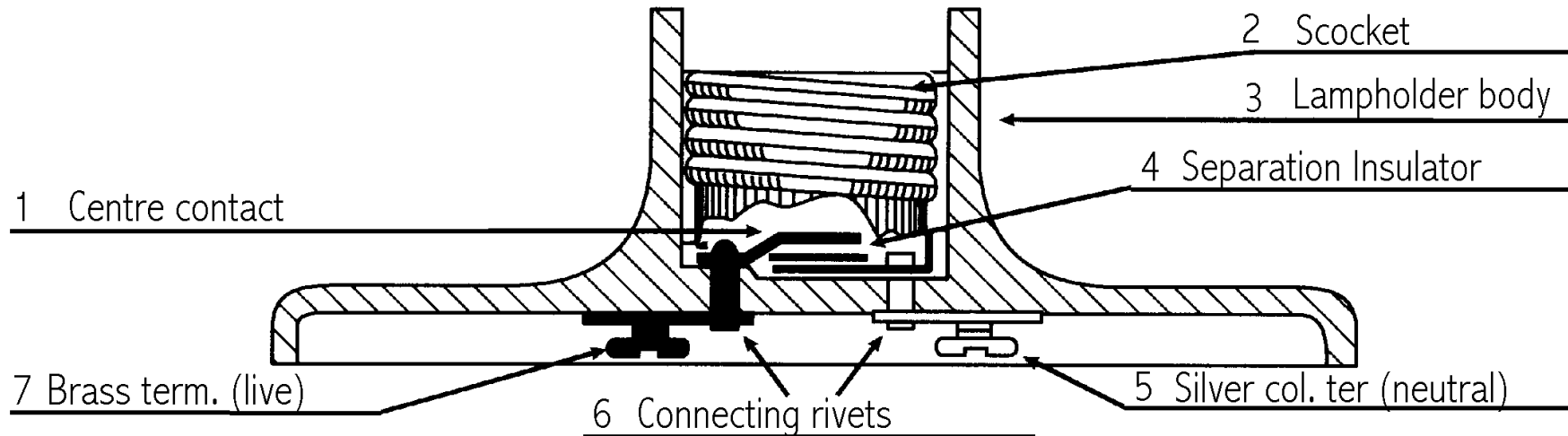


The Keyless Incandescent Lamp Holder

Purpose:

To hold an incandescent light bulb (retro-fit fluorescent) by a screw socket, and allow a safe path for current to flow to the disposable light bulb.

Parts and Construction:



Operation:

Supplies electricity to the light bulb through the socket neutral and the centre live contact and is usually controlled by a separate switch, unless it is built in, in which case it would be considered a “Keyed Incandescent Lamp Holder”.

Safety:

Centre rivet is always the live or brass colour terminal in order to reduce the chances of shock. Light switch should be turned off when changing light bulbs.